

# Location Map



- Easy access via PIE
- Near Bedok Bus Interchange, Bedok and Bedok North MRT Stations

**maple<sup>tree</sup>**  
**industrial**  
 Your Preferred Real Estate Partner

## Leasing Enquiries

- ☎ 6377 8000
- ✉ [industrial@mapletree.com.sg](mailto:industrial@mapletree.com.sg)
- 🌐 [www.mapletreeindustrialtrust.com](http://www.mapletreeindustrialtrust.com)

**Mapletree Industrial Trust**  
 10 Pasir Panjang Road, #13-01, Mapletree Business City, Singapore 117438

Disclaimer: While every reasonable care has been taken in preparing this factsheet, neither Mapletree Industrial nor their appointed marketing agents can be held responsible for any inaccuracy or changes and any loss or damage arising therefrom. All information and specifications are subject to changes as may be approved or required by the relevant authorities and shall not form part of an offer or contract. All interested parties should satisfy themselves by inspection and enquiry as to the accuracy of the particulars which are believed to be correct but are not regarded as statements or representations of fact.

# Chai Chee Lane

510, 512, 514 Chai Chee Lane  
 Singapore 469027, 469028, 469029

## General Information

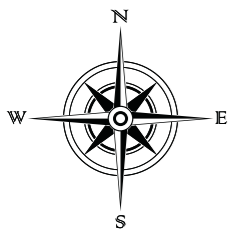
<b>Building Type</b> • Flatted Factory	<b>Zoning</b> • Business 1	<b>Gross Floor Area</b> • 90,455 sqm	<b>Net Lettable Area</b> • 73,192 sqm
<b>Total Units</b> • 221	<b>Unit Sizes</b> • 123 – 518 sqm	<b>Parking Lots</b> • 359	<b>Amenities</b> • Canteen • ATM • AXS

## Technical Specifications

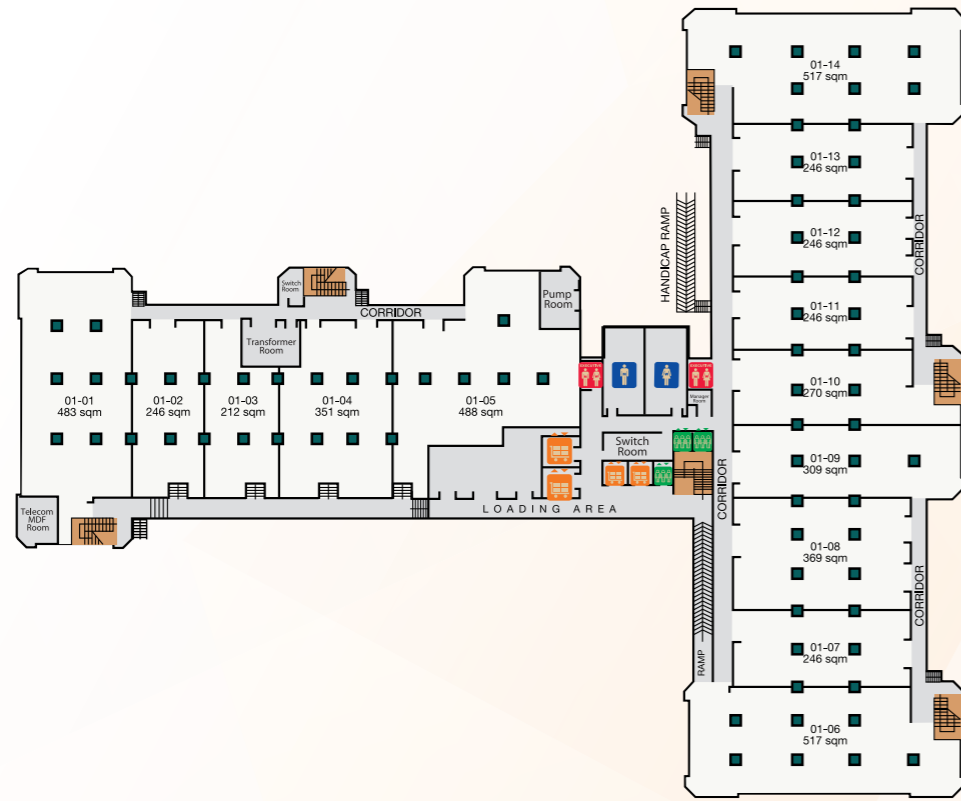
<b>Floor Loading</b> • 7.5 – 12.5 KN/sqm	<b>Floor to Floor Height</b> • 3.6 m	<b>Passenger Lift</b> • 3 nos.	<b>Cargo/Service Lift</b> • Blk 512: 1 no. / 2,000 kg 1 no. / 2,245 kg 2 nos. / 3,000 kg
<b>Loading / Unloading</b> • 2 dock leveller	<b>Power Supply Allocation</b> • 200 VA/sqm	<b>Fire Protection</b> • Automatic fire alarm & sprinkler system • Smoke detectors • Dry riser hoses • Manual call points	• Blk 514: 2 nos. / 2,000 kg 2 nos. / 3,000 kg



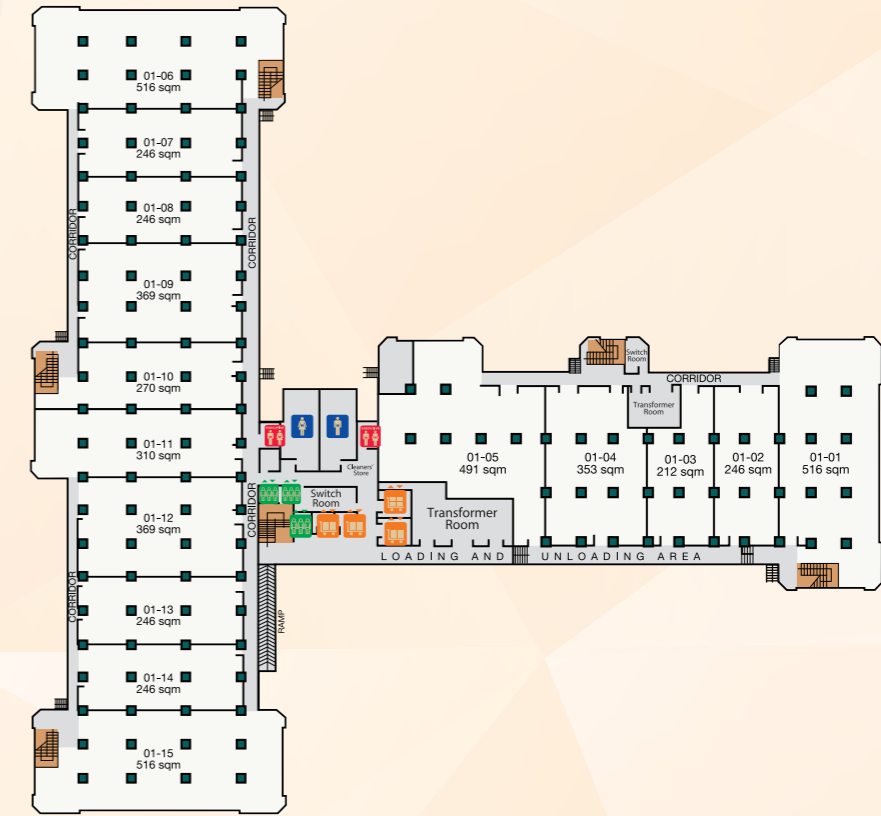
This development comprises two seven-storey Flatted Factories and an amenity centre. The cluster is in close proximity to landed housing estates and industrial developments. It is easily accessible via arterial roads, major expressways and public transportation.



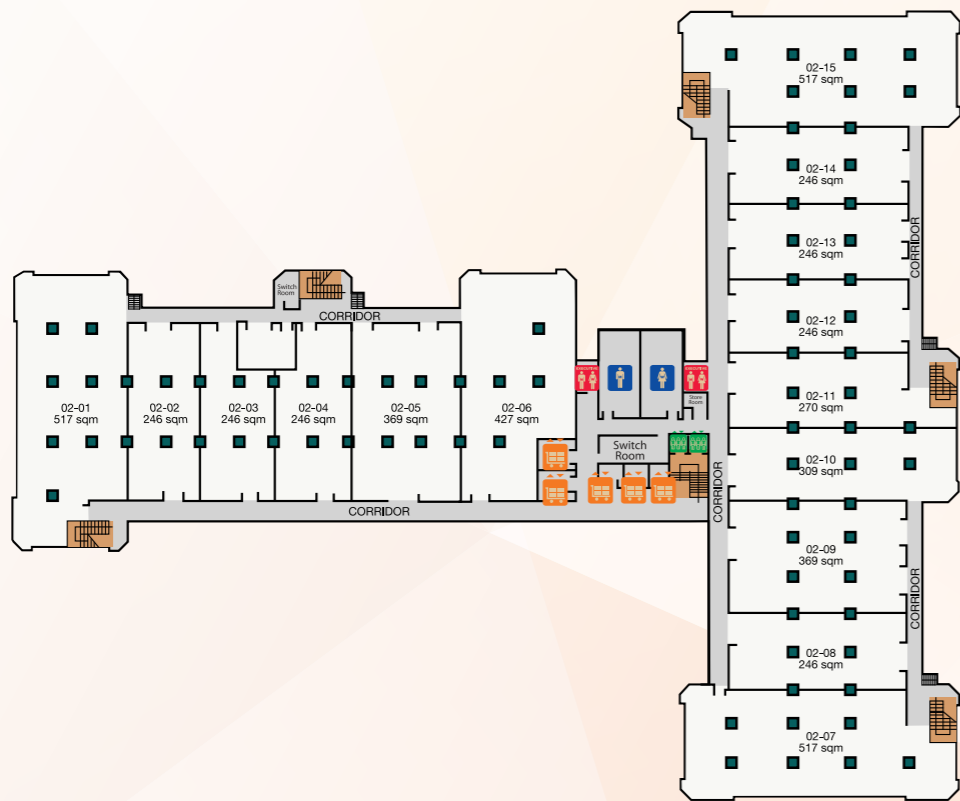
**BLK 512 - LEVEL 1 TYPICAL FLOOR PLAN**



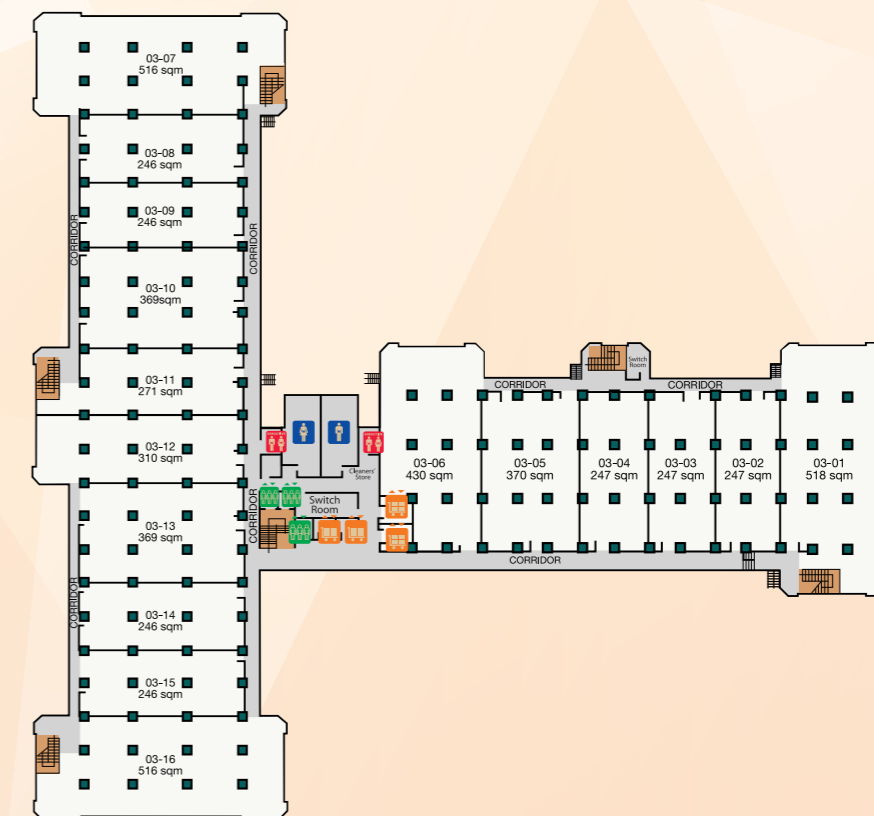
**BLK 514 - LEVEL 1 TYPICAL FLOOR PLAN**



**BLK 512 - LEVEL 2 TYPICAL FLOOR PLAN**



**BLK 514 - UPPER LEVEL TYPICAL FLOOR PLAN**



Toilet



Executive Toilet



Passenger Lift



Goods Lift